

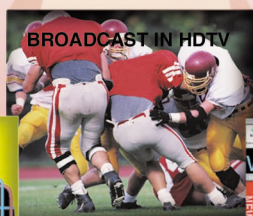
LTM1555 LCD

15" LCD Panel TV with Multi-Media PC/DVD/DTV Inputs

Built-in NTSC tuner



- HDTV monitor with add-on DTV receiver/decoder that outputs 1080i, 480P or 720P
- Standard aspect ratio
- DVD/DTV/PC capable
- Resolution XGA (1024 x 768)
- Display exceeds 720P
- 400:1 contrast ratio
- Brightness 450 cd/m²
- 6-Watts audio total
- Viewing angle 150/120
- Lamp life 60,000 hours
- Response time: 25 ms
- VESA standard mounting holes
- Wall or stand mount capable
- Color: metallic silver



DTV capable



DVD capable



PC capable



LTM1555 LCD

15" LCD Panel TV with Multi-Media PC/DVD/DTV Inputs

TV / VIDEO

Standard Aspect Ratio

HDTV monitor with add-on DTV receiver/decoder that outputs 1080i, 480P or 720P

400:1 Contrast Ratio

Progressive scan

V-chip system¹ allows blocking of rated TV and movie programs determined by the parent to contain objectionable content

PC (PIP) Picture-In-Picture allows you to watch video while working on the PC

Digital Comb Filter offers an improvement over a standard comb filter to virtually eliminate edge crawl and rainbow effects while enhancing picture resolution

Color Temperature Controls Normal, Warm and Cool selectable with On-Screen Display

CaptionVision (CC) displays dialog that can be read along with encoded broadcast TV programs and pre-recorded videos

181-Channel Synthesized Tuning

Video Noise Reduction

Digital Signal Processing

Energy Star Compliant¹ to help lower energy consumption

CONVENIENCE

Previous Channel button permits switching back and forth between two channels

Trilingual On-Screen Displays in English, Spanish and French

Translucent On-Screen Menu System simplifies menu selection and clearly identifies all video, audio, time and setup options

Variable Sleep Timer to turn the TV off in time intervals from 10 minutes to six hours

Viewing Mode: indicates Panorama, 4:3, Zoom I, Zoom II or 16:9

Viewing Angle 150/120

Channel Scan

Picture Freeze

Channel Labeling

Remote Control

AUDIO

Side Speaker Design

Stereo Broadcast Reception with MTS decoder for precise stereo imaging

Stereo Broadcast Reception with dbx[®] Noise Reduction

6 Watts Total Audio Output

Surround Sound

Virtual Dolby[®] Sound

CONNECTIONS

S-Video Inputs 1 rear for superb picture quality

DVD 480i Video Input 1 rear

DTV 480p/1080i Video Input 1 rear

PC Audio Input 1 rear

PC Video Input 1 rear

RF Input 1 rear

Headphone Jack on rear panel

QUALITY

Extended Warranty: 1 year parts and labor warranty (90 days parts and labor for commercial use) backed by Samsung toll-free support, 24 hours a day, 7 days a week

SPECIFICATIONS

Panel: TFT-LCD

TV System: American NTSC standard color
Channel Coverage: VHF 2-13, UHF 14-69, CATV 1-125 (up to 181 pre-selected channels)

Antenna: CATV/VHF/UHF 75-ohm, F-type

Audio Power: 3 watts RMS/channel, 6 watts total

Power Requirements: 120W AC, 60Hz

Power Consumption: Approximately 48 watts (power-on); 2 watts (stand-by)

Response Time: 25 ms

DIMENSIONS

Net Dimensions (WHD):

18³/₄" x 12¹/₂" x 2" (without stand)

18³/₄" x 15⁵/₈" x 8" (with stand)

Net Weight: 8³/₄ lbs. (with stand)

Shipping Dimensions (WHD):

21¹³/₁₆" x 10¹/₄" x 18³/₁₆" (with stand)

Shipping Weight: 14 lbs.

TO ORDER

LTM1555X/XAA

UPC CODE

036725215559

¹An Energy Star partner, Samsung has determined that this product meets the Energy Star guidelines for energy efficiency. Energy Star is a registered trademark of the U.S. Environmental Protection Agency.

²Feature dependent upon broadcasting of information by local off-air TV and cable channels.

Design and specifications are subject to change without notice. Non-metric weights and measurements are approximate. Remote Surf is a trademark of Samsung Electronics America, Inc. dbx is a registered trademark of Corillon Electronics. Dolby Digital, Dolby Pro-Logic and the Double D symbol are trademarks of the Dolby Licensing Corporation. All brand, product, service names and logos are Trademarks of their respective manufacturers and companies.

402-SS Printed in USA

© 2002 Samsung Electronics America, Inc.



Side view



Front view



Top view



Samsung Electronics America, Inc.
105 Challenger Road, Ridgefield Park, NJ 07660-0511
Tel (201) 229-4000 • 1-800-SAMSUNG
www.samsungusa.com

